

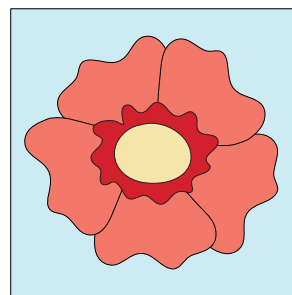
*I have to include a block for my mom. She doesn't sew, or crochet, or do any kind of crafty things. What we share is our love of flowers. Her favorite is a pink rose. Ever since I started to design my own shapes, I've added flowers to my quilts. This is my favorite rose I've ever designed, and it's for my mom Bonnie. You see variations of it often in my work. Real flowers are a passion of mine, so in my own yard I have several rose bushes in both pink for mom and red for me.*

## Wild Roses

for the Splendid Sampler™

Pat Sloan

Finished Block Size 6" x 6"



### Requirements

- # 1 square - 6 1/2" x 6 1/2" (Background)
- # Assorted scraps for rose centre, ruffle and petals.

### Cutting Instructions

From fabric A cut:

- ✂ Cut 1 centre.

From fabric B cut:

- ✂ Cut 1 Ruffle

From fabric C cut:

- ✂ Cut 2 petals

From fabric D cut:

- ✂ Cut 3 petals

From fabric E cut:

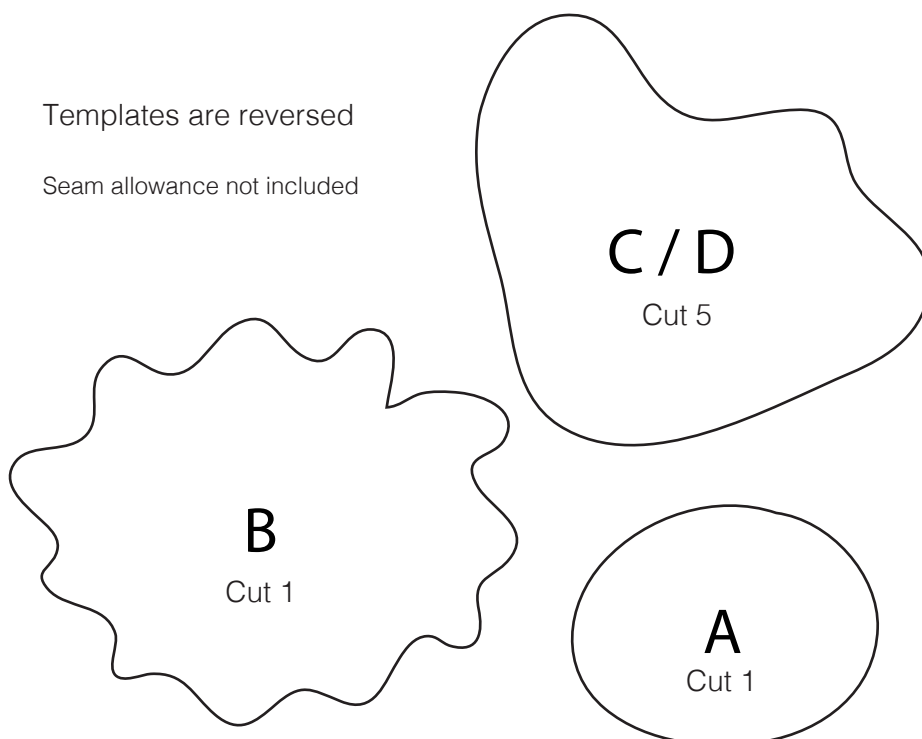
- ✂ 1 background square - 6 1/2" x 6 1/2"

### Block Assembly

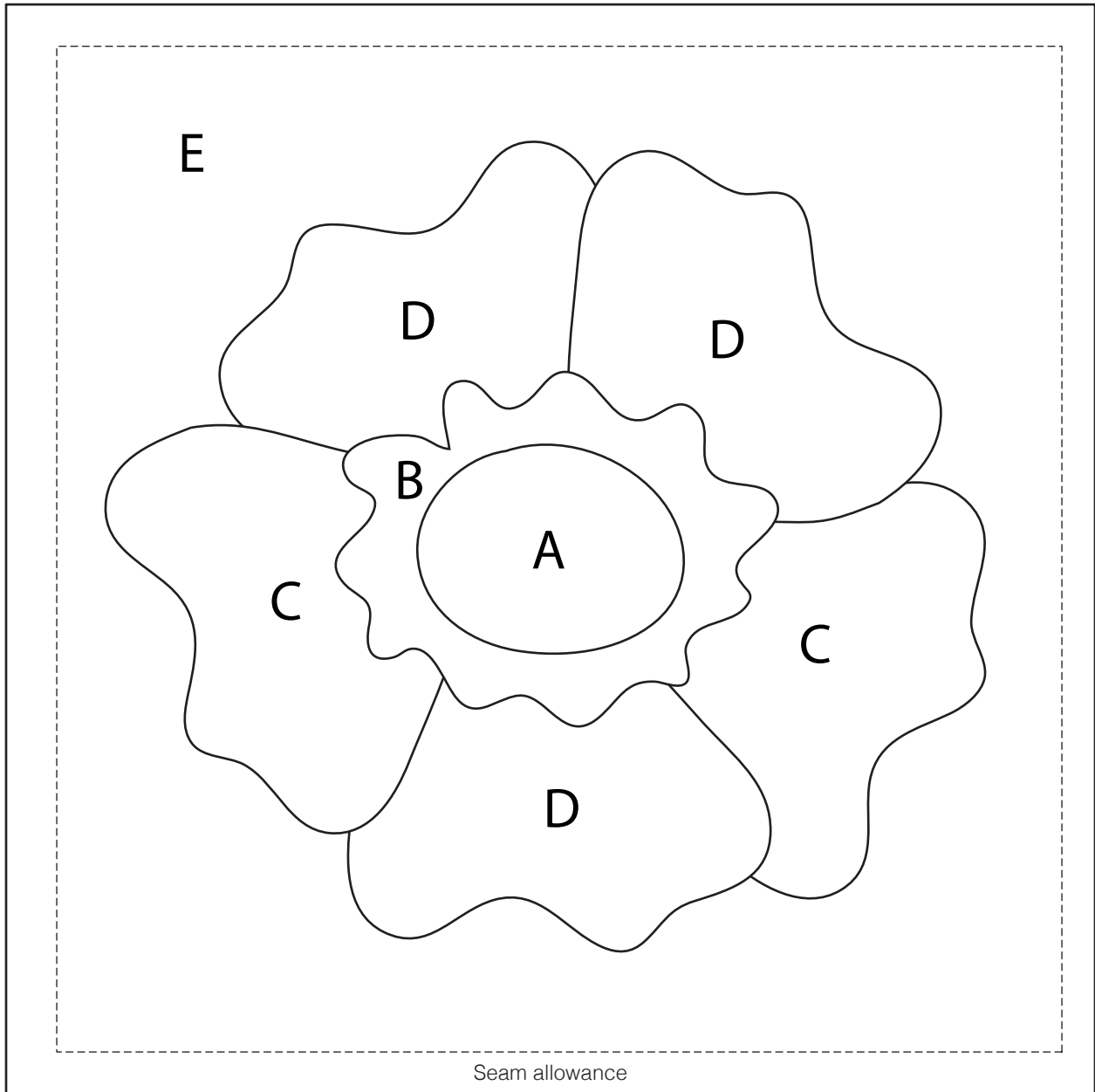
1. Position the 5 petals in the middle of the fabric E background.
2. Place the ruffle in the centre of the petals.
3. Place the flower centre on top of ruffle.
4. Appliqué your Wild Rose.

Templates are reversed

Seam allowance not included



1 inch



Seam allowance

1 inch

**Pat Sloan**

newsletter signup <http://mad.ly/signups/99771/join>

my fabulous online classroom <https://www.facebook.com/groups/QuiltWithPatSloan/>

my Youtube videos <https://www.youtube.com/user/PatSloan>

Instagram <http://www.instagram.com/quilterpatsloan>

About page: <http://patsloan.typepad.com/quiltershome/about.html>

#TheSplendidSampler

© Copyright 2015 Pat Sloan. This pattern is for personal use only. It cannot be used for commercial purposes. It cannot be copied or distributed in any format. It cannot be used with distribution of any product, including kits or made into a pattern for re-sale without the written permission from the designer.

