

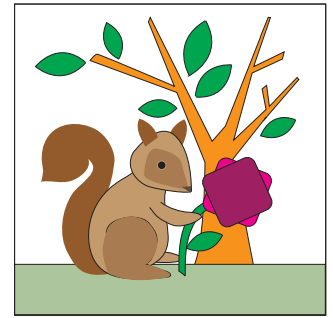


Sewing Nut

for the Splendid Sampler™

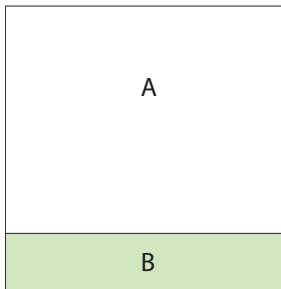
Frances Newcombe

Finished Block Size 6" x 6"



Requirements

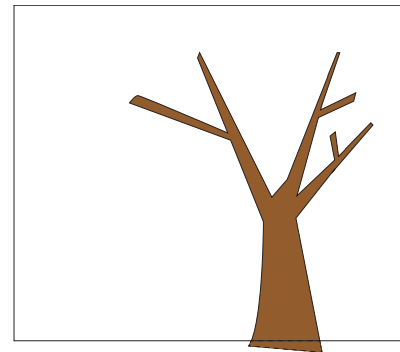
- # 1 rectangle - 6" x 7" of light fabric for background (A)
- # 1 rectangle - 1 ½" x 7" of medium/dark fabric for grass (B)
- # 6 Scraps of assorted fabrics for appliqué
- # Various Aurifil thread colors to match
- # Good sharp small scissors to cut out your shapes
- # Small yo yo maker and decorative buttons (optional)
- # Fusible webbing - Heat and Bond Lite



Preparation

1. Trace all your shapes onto the dull side of the fusible webbing - tree, Squirrel, leaves, and stem.
2. Cut out shapes ⅛" from drawn line.
3. Fuse onto wrong side of assorted fabrics.
4. Cut on drawn line and peel off paper backing. Set applique pieces aside.

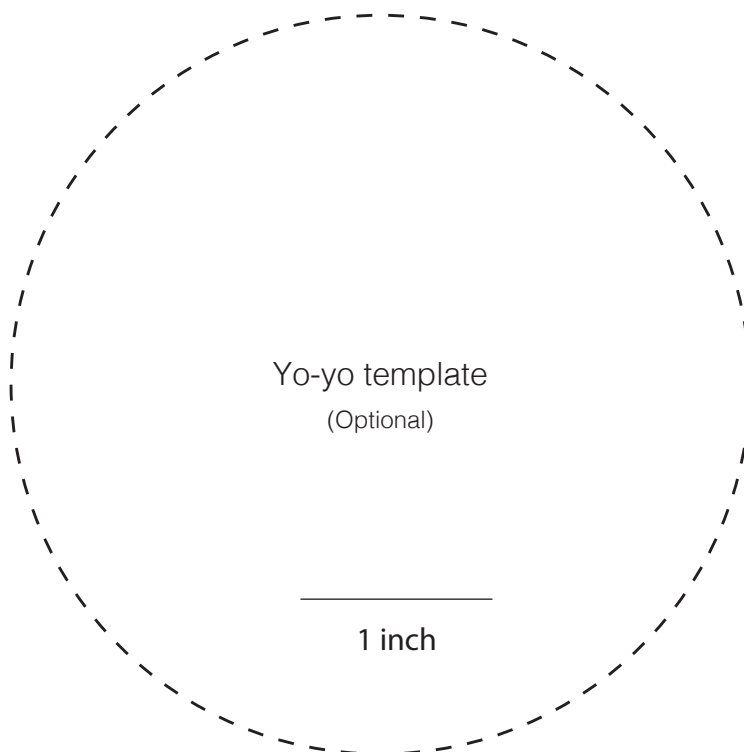
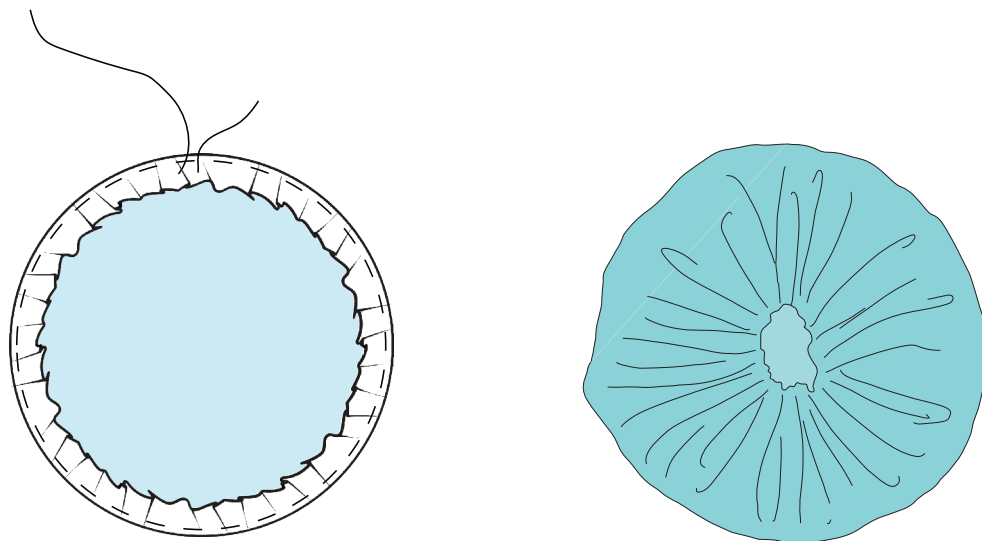
5. Using the outline drawing as a reference, position the tree in place on the 6" x 7" light background fabric. The base of the tree will be tucked under the fabric B.



6. Fuse the tree to background A.
7. Sew the bottom ½" x 7" strip to the white background using ¼" seam.
8. Fuse the squirrel pieces.
9. Fuse the leaves.
10. Using your favourite stitch, applique around squirrel. Leave the nose and eye until all other pieces have been applied to block.
11. Place the square ruler on the bottom edge of the block and trim sides and top. Trim block to 6 ½" x 6 ½".
12. Add embellishments:
 - ✂ Eye for squirrel.
 - ✂ Cute buttons.
 - ✂ Yo-yo or other embellishment for flower head.

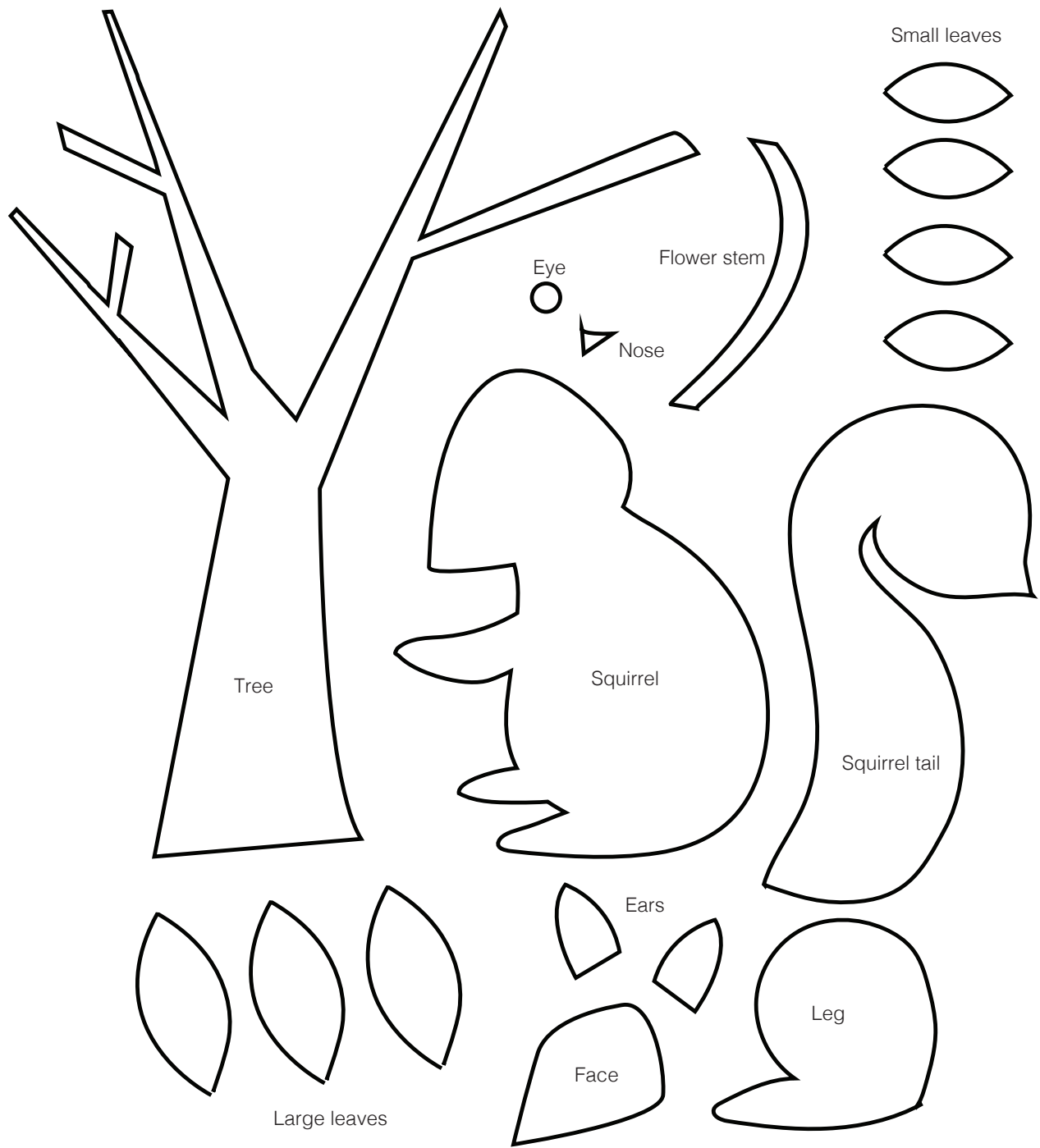
How to make a yo-yo

1. Cut 1 circle from yo-yo template.
2. Fold edge over $\frac{1}{4}$ " to the wrong side of the fabric.
3. Using small, evenly spaced stitches, sew a running stitch $\frac{1}{8}$ " from edge of circle. End your stitching near the first stitch. Leave a long tail of thread for the beginning and end. Leave sewing needle attached to thread.
4. Gently pull both threads tight to gather the circle in the centre.
5. Make one tiny back stitch to secure threads and make a knot.



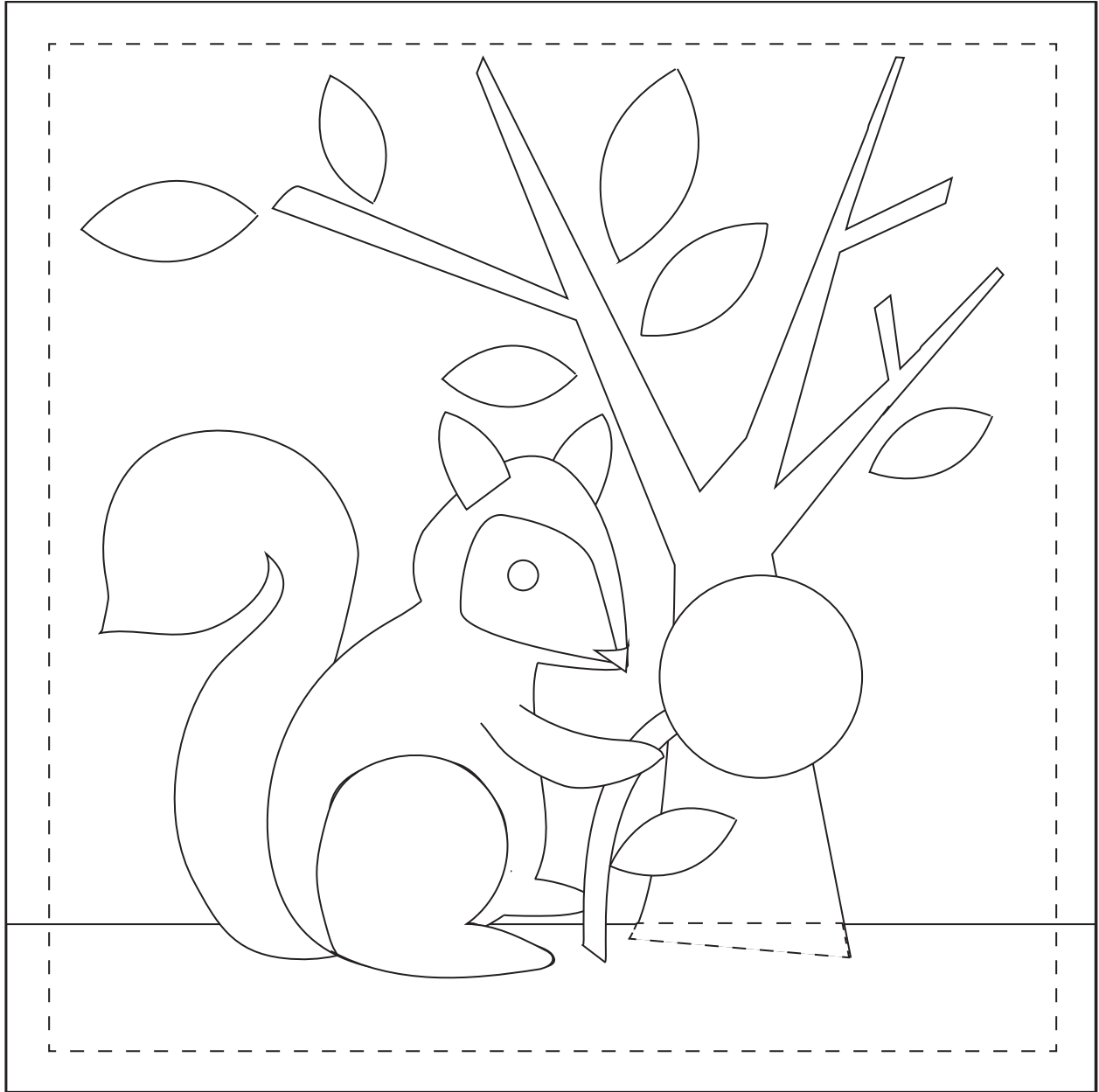
Yo-yo template
(Optional)

1 inch



Template is reversed

No seam allowance added



1 inch

#TheSplendidSampler

© Copyright 2015 Frances Newcombe Designs. This pattern is for personal use only. It cannot be used for commercial purposes. It cannot be copied or distributed in any format. It cannot be used with distribution of any product, including kits or made into a pattern for re-sale without the written permission from the designer.

