

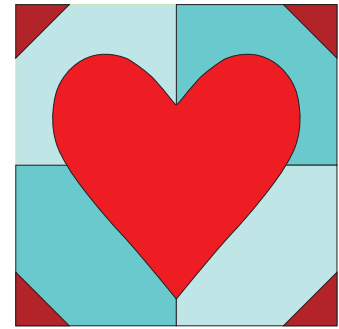
*I've been heart-crazy for many years, and having our Splendid Sampler project kick off on Valentine's Day is a dream come true. Quilting has brought me amazing friends, incredible business opportunities, and adventures beyond my wildest imagination. My heart truly is aflutter every time I see a quilt. Let us begin this Splendid Adventure.*

# Hearts Aflutter

for the Splendid Sampler™

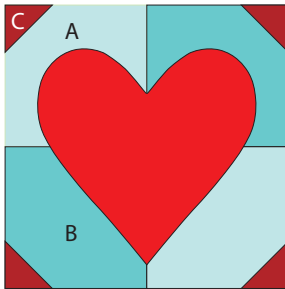
Pat Sloan

Finished Block Size 6" x 6"



## Requirements

- # 4" x 7" rectangle (fabric A)
- # 4" x 7" rectangle (fabric B)
- # 4" x 4" square (fabric C)
- # 5" x 5" square (heart fabric)



## Cutting Instructions

From fabric A cut:

- ✂ 2 background squares - 3 1/2" x 3 1/2"

From fabric B cut:

- ✂ 2 background squares - 3 1/2" x 3 1/2"

From fabric C cut:

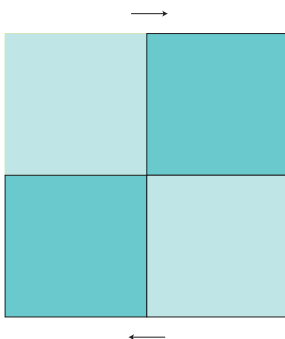
- ✂ 4 corner squares - 1 1/2" x 1 1/2"

From heart fabric:

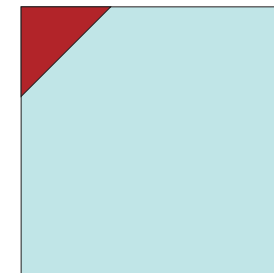
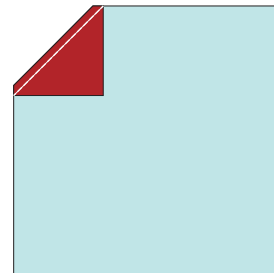
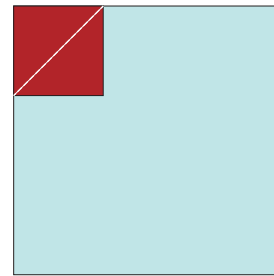
- ✂ Cut 1 heart using template A.

## Block Assembly

1. Alternating the 3 1/2" squares, sew a 4-patch. Block size is 6 1/2" x 6 1/2"

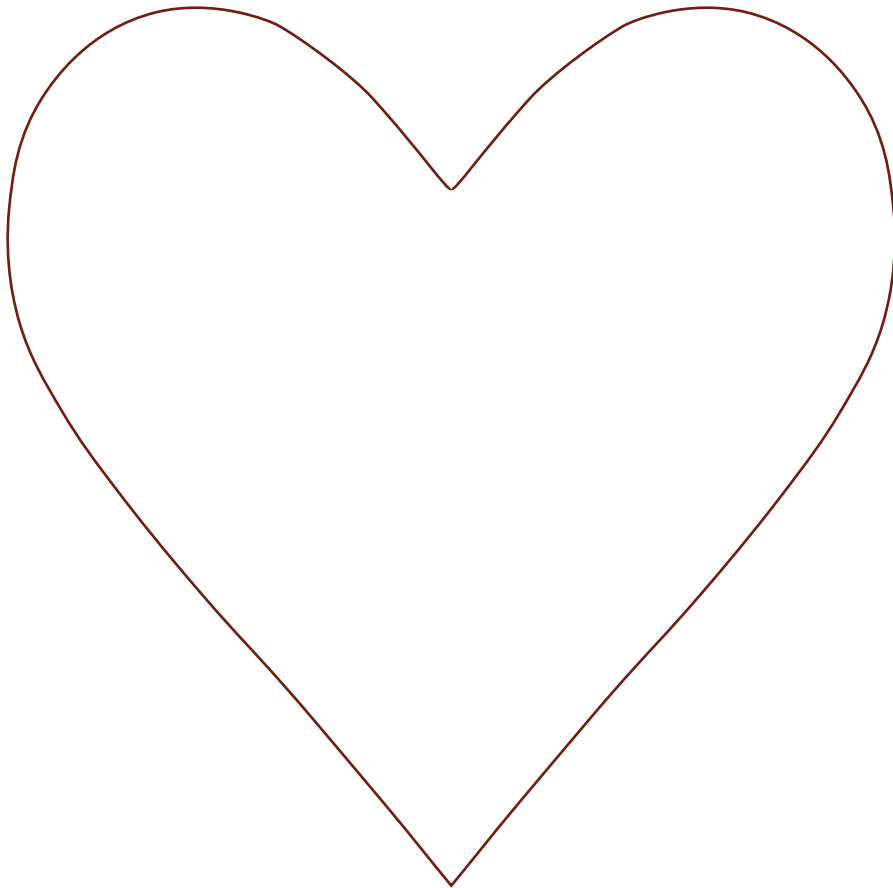


2. Draw a diagonal on the back of each 1 1/2" x 1 1/2" corner square.
3. Place the square in the block corner right side down.
4. Sew on the line.
5. Flip the square open, trim away excess.



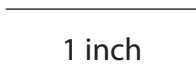
6. Applique the Heart to the center.

Do not scale or 'fit to page'



Template A

No seam allowance added



Newsletter sign up <http://mad.ly/sign-ups/99771/join>  
my fabulous online classroom <https://www.facebook.com/groups/QuiltWithPatSloan/>  
My Youtube videos <https://www.youtube.com/user/PatSloan>  
Instagram <http://www.instagram.com/quilterpatsloan>  
About page: <http://patsloan.typepad.com/quiltershome/about.html>

#TheSplendidSampler

© Copyright 2015 Pat Sloan [www.patsloan.com](http://www.patsloan.com) This pattern is for personal use only. It cannot be used for commercial purposes. It cannot be copied or distributed in any format. It cannot be used with distribution of any product, including kits or made into a pattern for re-sale without the written permission from the designer .

