

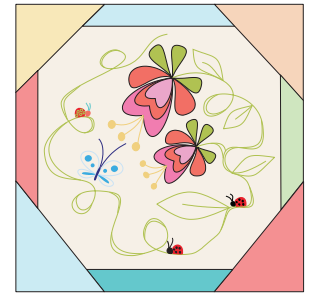
Walking through a garden, park, or bush track, I feel nature all around me. Tiny ladybugs and butterflies, attracted by the colours and nectar of the flowers, are always a pleasant surprise on my walks. Nature is a mixture of all colours and textures, and this is reflected in the scrappy border of the block.

Nature's Walk

for the Splendid Sampler™

Vicki Tucek

Finished Block Size 6" x 6"



Requirements

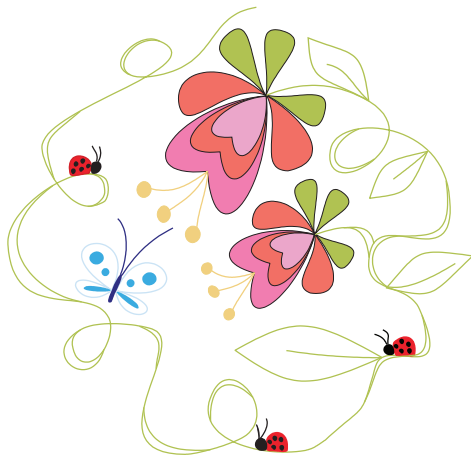
- # 7 ½" x 7 ½" square of background fabric
- # 2 different 1" x 5 ½" strips of fabrics
- # 2 different 1" x 6 ½" strips of fabrics
- # 4 x 2 ½" x 2 ½" squares of different fabrics
- # 7 ½" x 7 ½" square of Whisperweft or Iron Pellon for backing of stitchery Aurifloss threads
- # 2140 – Yellow, 2420 – Light Pink, 2588 – Magenta Pink, 2692 - Black
- # 5002 – Orange, 2720 – Light Blue, 6738 – Dark Blue, 2260 – Dark Red, 2910 – Green Embroidery needle
- # Pigma Pen

Preparation

1. Find the centre of the background fabric. Using the pigma pen trace the design on to the background fabric.
2. Iron on the Whisperweft or Iron-On Pellon to the back of the design.

Block Assembly

Embroidery



Lines and leaves

- # Back stitch the leaves and lines and Satin Stitch the thick parts of the lines (2910 - green).

Butterfly

- # Body and Antennae (2692 - black) -Back stitch the Antennae Satin Stitch the body.
- # Outline of wings (2720 - light blue) –Back stitch
- # Dots on wings (6738 - dark blue) – Satin Stitch

Flowers

- # Stamens (2140 - yellow) – Back stitch and Satin Stitch the ends
- # Centre of flowers (2420 - light pink, 5002 - orange, 2588 - magenta) – Satin Stitch
- # Leaves (2910 - green) – Satin Stitch

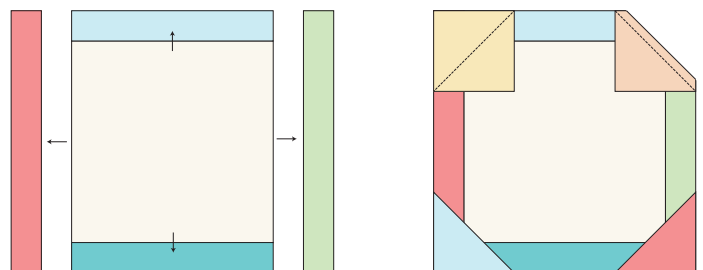
Ladybug

- # Body (2260 - dark red) – Satin Stitch
- # Head (2692 - black) – Satin Stitch
- # Antennae (2692 - black) – Back Stitch

After stitching the design, lightly press from back. Ensuring the design is centred, trim back the square to 5 ½" x 5 ½".

Borders

1. Sew a 1" x 5 ½" strip of fabric to the top and bottom of the square. Press in direction of arrows.
2. Sew the two 1" x 6 ½" strips of fabrics to the sides. Press in direction of arrows.
3. Draw a diagonal line on the back of each of the 4 - 2 ½" x 2 ½" squares of different fabrics and place on each corner of the 6 ½" square.
4. Sew on the lines and trim ¼" from sewn line. Press away from the centre.
5. Unfinished block size is 6 ½" x 6 ½".





1 inch

Blog - <http://tozzscorner.blogspot.com.au>
Email - vtucek@optusnet.com.au
Instagram - @vickivict
Facebook – Vicki Tucek

#TheSplendidSampler

© Copyright 2015 Vicki Tucek. This pattern is for personal use only. It cannot be used for commercial purposes. It cannot be copied or distributed in any format. It cannot be used with distribution of any product, including kits or made into a pattern for re-sale without the written permission from the designer.

